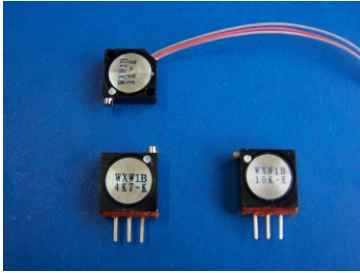


WXW1B Square Trimmer Potentiometer



Features

- Multiturn / Wirewound
- Industrial / Sealed
- Top and side adjust types (1,2,3 most popular)

Electrical Characteristics

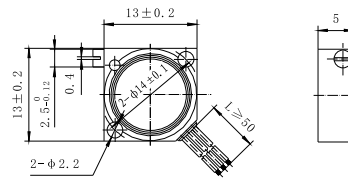
Standard Resistance Range
100 to 15K ohms
(see standard resistance table)
Resistance Tolerance
 $\pm 10\%$ or $\pm 5\%$ std.
(tighter tolerance is available)
Absolute Minimum Resistance
2% max.
Insulation Resistance
500 Vdc
1,000 megohms min.
Dielectric Strength
101.3 kPa 500 Vac
11.59 kPa 200 Vac
Effective Electrical Travel
32 turns min.

Environmental Characteristics

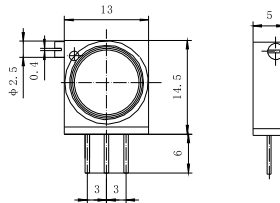
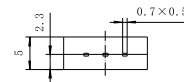
Power Rating (100 volts max.)
0.5 watt (70°C), 0 watt (125°C)
Temperature Range
-55°C to +125°C
Temperature Coefficient
 $\pm 100\text{ppm}/^\circ\text{C}$
Vibration
98 m/s^2
(2% Δ TR; 3% Δ VR)
Shock
390 m/s^2
(2% Δ TR; 2% Δ VR)
Load Life
1,000 hours 0.5 watt @ 70°C
(5% Δ TR; 8% or 8 ohms, Whichever is greater, CRV)
Rotational Life
200 cycles
(5% Δ TR; 8% or 8 ohms, Whichever is greater, CRV)

Physical Characteristics

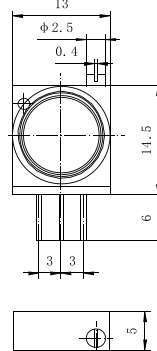
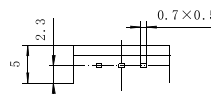
Mechanical Angle
360°
Torque
20 $\text{mN} \cdot \text{m}$ max.



WXW1B-1



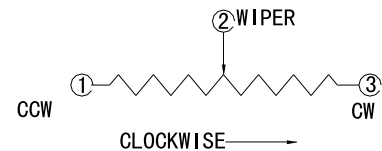
WXW1B-2



WXW1B-3

How to order

Model **WXW1B-1-102**
Style _____
Resistance Code _____



Standard Resistance Table

Resistance (Ohms)	Resistance (Ohms)
100	1,200
120	1,500
150	1,800
180	2,200
220	2,700
270	3,300
330	4,700
470	5,600
560	6,800
680	8,200
820	10,000
1,000	12,000
	15,000

Special resistance is available
Detail Specification: Q/RYS07-2002