

DEE ▪ Series



技术参数 Technical characteristics

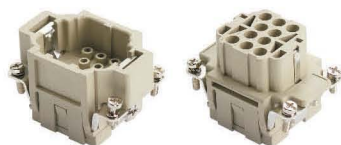
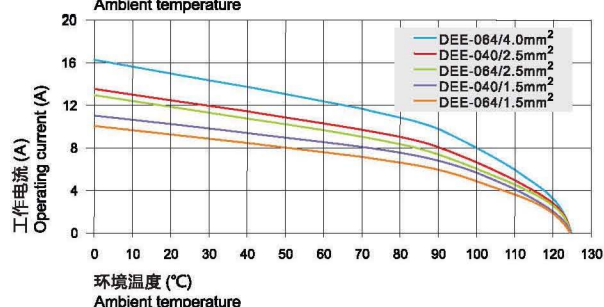
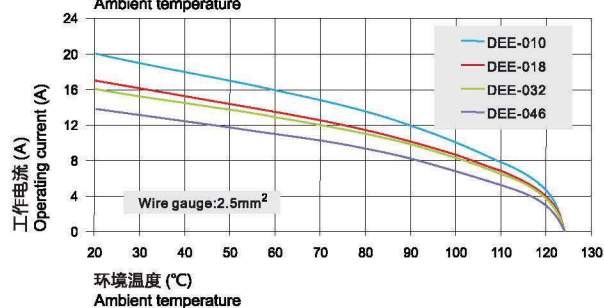
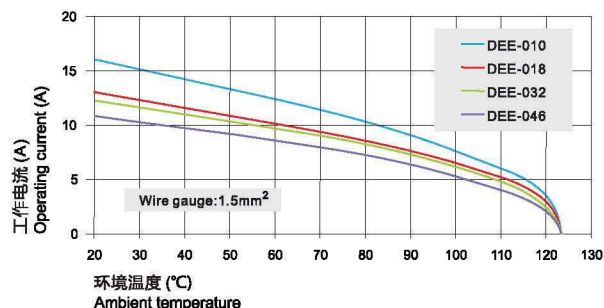
规范 Specifications	DIN EN 60 664 DIN EN 61 984
插芯 Inserts	
依据EN 61 984的额定电压 Electrical data acc.to EN 61 984	
接插件针数 Number of contacts	10,18,32,40,46,64(2X32),92(2X46)+PE
• 额定电流 Rated current	16A
• 额定电压 Rated voltage	500V
• 额定脉冲电压 Rated impulse voltage	6KV
• 污染程度 Pollution degree	3
• 污染等级2时的参数 Pollution degree 2 also	16A 830V 8KV 2
依据UL/CSA额定电压 Rated voltage acc.to UL CSA	600V
绝缘电阻 Insulation resistance	≥ 10 ¹⁰ Ω
材料 Material	聚碳酸酯 Polycarbonate
工作温度范围 Limiting temperatures	-40 °C ~+125 °C
依据UL94阻燃等级 Flammability acc.to UL94	V0
可拔插次数 Mechanical working life-mating cycles	≥ 500
插针 Contacts	
材料 Material	铜合金 Copper alloy
表面处理 Surface	镀金 Hard-gold plated 镀银 Hard-silver plated
接触电阻 Contact resistance	≤ 1m Ω
冷压连接 Crimp terminal	
• 导线规格 Wire gauge	0.14-4mm ²
• AWG	26-12
• 剥线长度 Stripping length	7.5mm

电流负载能力 Current carrying capacity

电流负载能力所受的限制主要来自包含接插针的接插体可承受的最大温度。
The current carrying is limited by maximum temperature of materials for Inserts and contacts including terminals.

测试和控制过程依据DIN EN 60512-5.

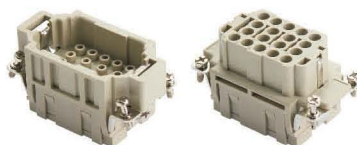
Measuring and testing techniques according to DIN EN 60512-5.



DEE-010-MC

DEE-010-FC

Terminal: Crimp terminal
Rated current: 16A
Rated voltage: 500V
Wire gauge: 0.14~4.0mm ²
AWG: 26-12
Poles: 10P+PE
Matching: D6B-Hoods&Housings



DEE-018-MC

DEE-018-FC

Terminal: Crimp terminal
Rated current: 16A
Rated voltage: 500V
Wire gauge: 0.14~4.0mm ²
AWG: 26-12
Poles: 18P+PE
Matching: D10B-Hoods&Housings



DEE-032-MC

DEE-032-FC

Terminal: Crimp terminal
Rated current: 16A
Rated voltage: 500V
Wire gauge: 0.14~4.0mm ²
AWG: 26-12
Poles: 32P+PE
Matching: D16B-Hoods&Housings



DEE-046-MC

DEE-046-FC

Terminal: Crimp terminal
Rated current: 16A
Rated voltage: 500V
Wire gauge: 0.14~4.0mm ²
AWG: 26-12
Poles: 46P+PE
Matching: D24B-Hoods&Housings



DEE-064-MC (1-32) (33-64)

DEE-064-FC (1-32) (33-64)

Terminal: Crimp terminal
Rated current: 16A
Rated voltage: 500V
Wire gauge: 0.14~4.0mm ²
AWG: 26-12
Poles: 64P+PE
Matching: D32B-Hoods&Housings



DEE-092-MC (1-46) (47-92)

DEE-092-FC (1-46) (47-92)

Terminal: Crimp terminal
Rated current: 16A
Rated voltage: 500V
Wire gauge: 0.14~4.0mm ²
AWG: 26-12
Poles: 92P+PE
Matching: D48B-Hoods&Housings