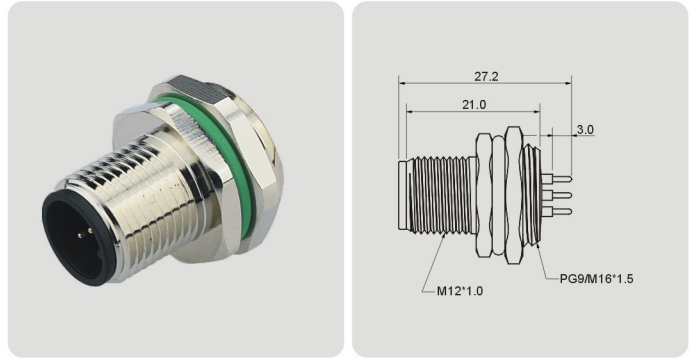


M12 x 1 针式面板安装插座，板前安装，非屏蔽，PCB焊接。

M12 x 1 Male Panel Mount Receptacle, Front Mounting, Unshielded, PCB Soldering.

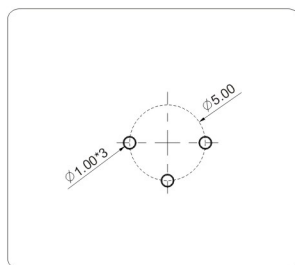


技术数据 Technical Data

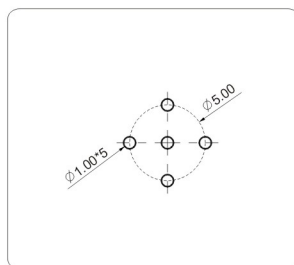
标准 Standard	IEC 61076-2-101	端子载体材料 Contact carriers material	PA
系列 Series	M12, Male	端子材料 Contact material	Copper Alloy, Gold-plated
Pin针数量 Number of Pins	03,04,05,08 Pin	金属螺母 Metal of nut	Zinc Alloy or Copper Alloy with Nickel Plated
额定电流 Rated Current	4A max.	胶圈 Seal	FKM / NBR / Silicon
额定电压 Rated voltage	250V max.	机械寿命 Mechanical life	> 100 mating cycles
绝缘电阻 Insulation resistance	≥100MΩ	—	—
接触电阻 Contact resistance	≤10mΩ	—	—
运行温度 Ambient temperature	-25 ~ +85℃	—	—
防护等级 IP Class	IP67	—	—

Number of Pins		03 Pin	04 Pin		05 Pin	08 Pin
Coding	Coded	A-Coded	A-Coded	D-Coded	A-Coded	A-Coded
	Front View					
Rated current	A.	4A	4A	4A	4A	2A
Rated voltage	V.	250V	250V	250V	60V	30V
Description		Order NO .	Order NO .	Order NO .	Order NO .	Order NO .
PG9		SP-M12A-03P-MM-SH7A001-00AH	SP-M12A-04P-MM-SH7A001-00AH	SP-M12D-04P-MM-SH7A001-00AH	SP-M12A-05P-MM-SH7A001-00AH	SP-M12A-08P-MM-SH7A001-00AH
Customized	
M16*1.5		SP-M12A-03P-MM-SH7A002-00AH	SP-M12A-04P-MM-SH7A002-00AH	SP-M12D-04P-MM-SH7A002-00AH	SP-M12A-05P-MM-SH7A002-00AH	SP-M12A-08P-MM-SH7A002-00AH
Customized	

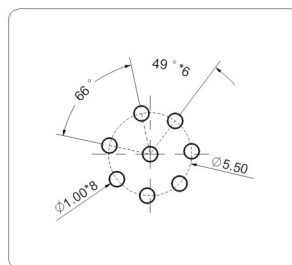
尺寸图 Dimension Figure



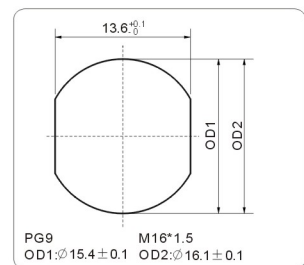
PCB Layout



PCB Layout



PCB Layout



Panel Cut-Out