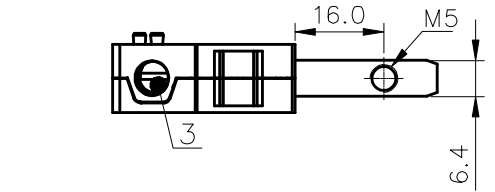
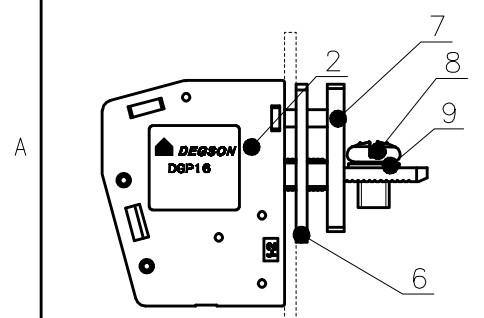
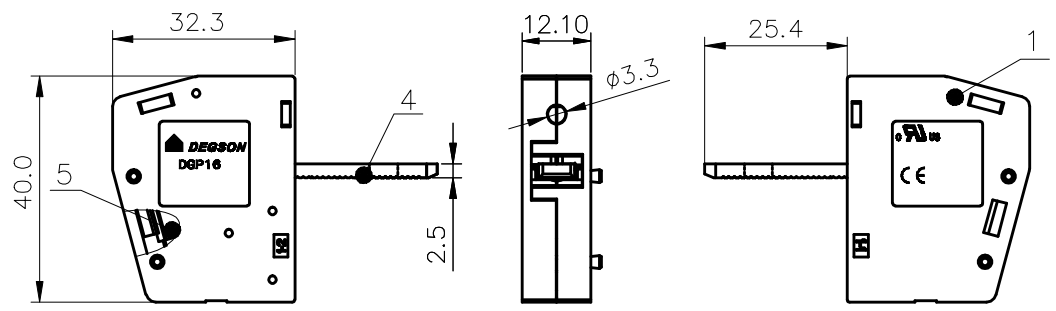


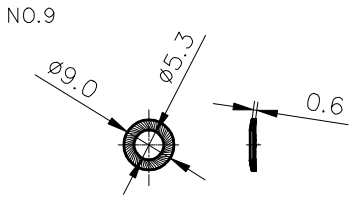
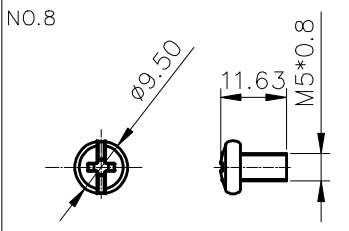
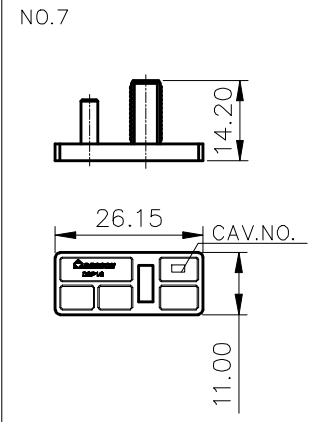
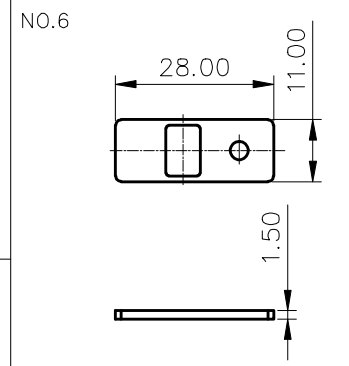
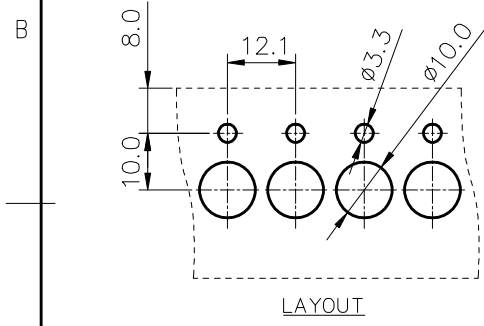
| 未注公差/General tolerances(mm) |       |       |       |       |       |       |       |       |       |       | 0.1/10<br>±2' |       |       |
|-----------------------------|-------|-------|-------|-------|-------|-------|-------|-------|-------|-------|---------------|-------|-------|
| 0                           | >3    | >6    | >10   | >18   | >30   | >50   | >80   | >120  | >180  | >250  |               |       |       |
| ~3                          | ~6    | ~10   | ~18   | ~30   | ~50   | ~80   | ~120  | ~180  | ~250  | ~315  | ~400          | ~500  | >500  |
| ±0.12                       | ±0.18 | ±0.22 | ±0.26 | ±0.31 | ±0.37 | ±0.57 | ±0.80 | ±0.93 | ±1.05 | ±1.15 | ±1.60         | ±2.20 | ±2.50 |



DGP16J-01P-1Y-00AH



Board(1~6mm)



|  |               |        |       |
|--|---------------|--------|-------|
| UL 标准/UL Standard:   | B             | C      | D     |
| 额定电压/电流/Rated Voltage(V)/Current(A)                              | 600/85        | 600/85 | 600/5 |
| IEC 标准/IEC Standard:   |               |        |       |
| 过压类别/Overvoltage Category/污染等级/Pollution Degree                  | III/3         | III/2  | II/2  |
| 额定电压/电流/Rated Voltage(V)/Current(A)                              | 500/76        | /      | /     |
| 额定脉冲电压(kV)/Rate Impulse Voltage(kV)                              | 6             | /      | /     |
| 螺丝扭矩/Torque Tightening(N·m/Lb.in)                                | M5, 2.0/17.54 |        |       |
| 线径范围(硬线和软线)/Wire Range(rigid and flexible)(mm <sup>2</sup> /AWG) | 0.5~16/20~4   |        |       |
| 间距/Pitch(mm)/线数范围/Poles  | 12.10/N=01P   |        |       |
| 剥线长度/Stripping length(mm)  | 16            |        |       |
| 使用温度范围/Operating temperature(°C)                                 | -40~+105      |        |       |
| 符合RoHS环保要求/Conform to RoHS                                       | Yes           |        |       |

| ITEM | NAME OF PART      | MATERIAL     | NOTES     |
|------|-------------------|--------------|-----------|
| 9    | Lock Washer       | Steel        | Zn Plated |
| 8    | Screw2            | Steel        | Zn Plated |
| 7    | Housing3          | PA66         | UL94V-0   |
| 6    | Antivibration Pad | EVA          | Black     |
| 5    | Cage              | Copper alloy | Ni Plated |
| 4    | Current Carrier   | Copper       | Sn Plated |
| 3    | Screw1            | Copper alloy | Sn Plated |
| 2    | Housing2          | PA66         | UL94V-0   |
| 1    | Housing1          | PA66         | UL94V-0   |

| REV | ECN | DESCRIPTION | DRFT | DATE |
|-----|-----|-------------|------|------|
|     |     |             |      |      |

|   |   |    |  |
|---|---|----|--|
| MATERIAL: /   | SURFACE: /  |    |  |
| MAT NO.: /  | <b>宁波高松电子有限公司</b><br><b>NINGBO DEGSON ELECTRICAL CO., LTD</b> |    |  |
| STATUS: /   |   |    |  |
| APPD:   | NAME: <b>DGP16-01P-1Y-00A(H)</b>                              |    |  |
| CHKD:   | DRAWING NO.: DGP16-C01  |    |  |
| DRFT: WWF 2015.05.31  | REV   | TO |  |
| SIZE: A4                  TYPE: CUSTOMER DRAWING         SCALE: 2:1         SHEET 1/1 |   |    |  |