

规格承认书

SPECIFICATION FOR APPROVAL

型号 (Model) : DVDKMJ-S

规格 (Spec.) : 1250 μ F \pm 5% 3600V.DC

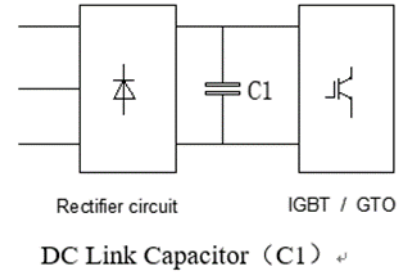
尺寸 (Size) : 340 \times 165 \times 605mm

| 版本号 Version | 更改说明 Description | 日期 Date |
|----------------|---------------------|------------|
| A/0 | 初始版本 | 2024-03-13 |

| 编制 MADE | 审核 CHECKED | 批准 APPROVED | 客户承认 CUSTOMER APPROVAL |
|------------|---------------|----------------|------------------------------|
| 朱益娟 | | | |

Application

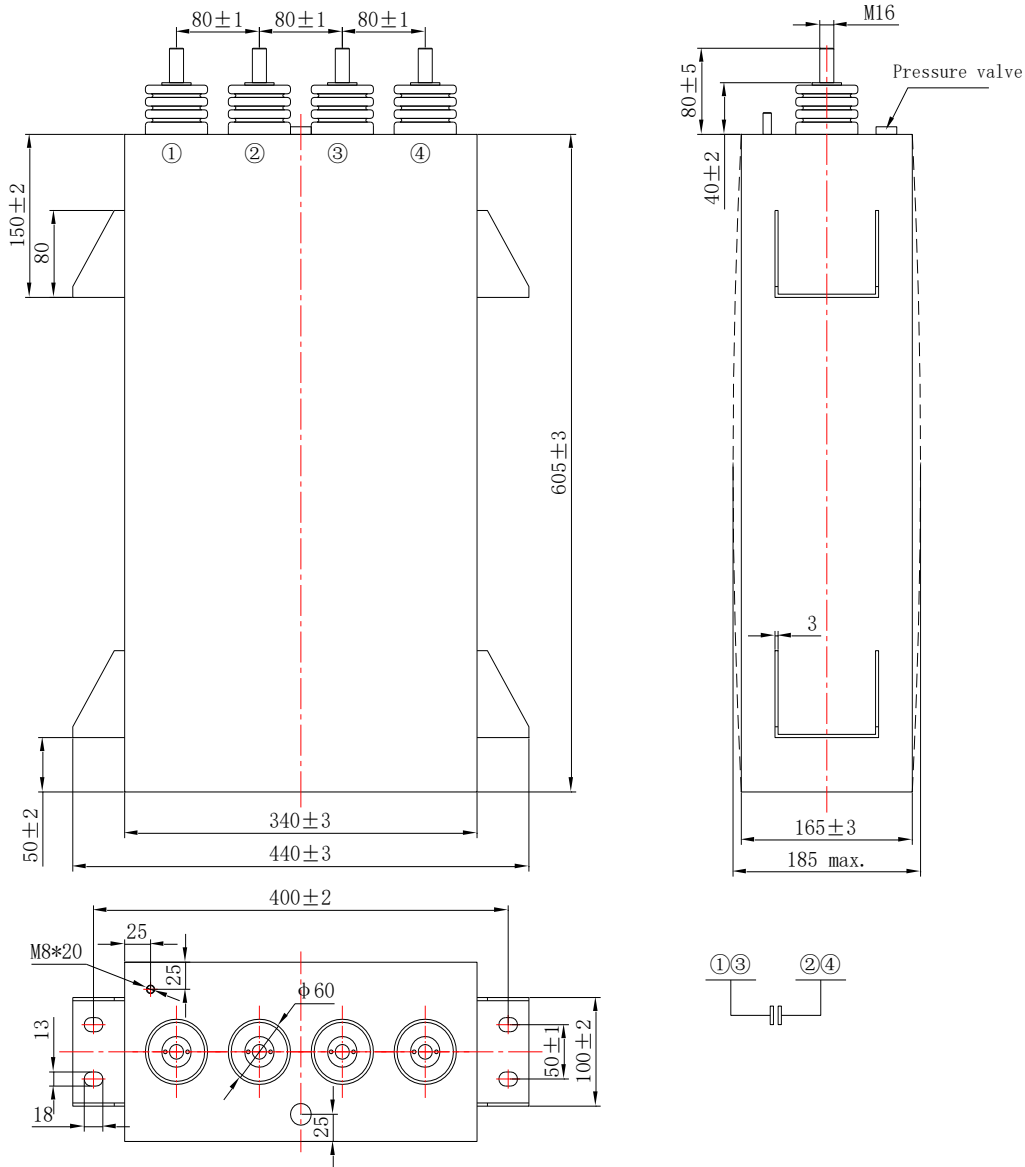
- Widely used in DC-Link circuit for filtering energy storage
- Can replace electrolytic capacitors, better performance and longer life
- Wind power, photovoltaic power inverter; electric vehicles and hybrid vehicles; Locomotive traction converter ;welding equipment ,power supplies and induction heating equipment, for the DC link filter
- Case material: Stainless steel



Standards: IEC61071

Outline drawing

Unit:mm (undeclared tolerance: ±1mm)



code:7tyeit-6tyfie/T(C2)*W(B4)*H(B7)

Technical data

| | | |
|--------------------------------------|------------------------|----------------------------|
| Rated capacitance | C_N | 1250 μ F \pm 5% |
| Rated voltage | U_N | 3600V.DC |
| Non-recurrent surge voltage | U_s | 5400V |
| Maximum current | I_{max} | 240A |
| Maximum peak current | \hat{I} | 18.75kA |
| Maximum surge current | I_s | 56.25kA |
| Series resistance | R_s | \leq 0.8m Ω |
| Tangent of the loss | $\tan \delta$ | 0.002(100Hz) |
| Tangent of the loss angle | $\tan \delta 0$ | 0.0002 |
| Self discharge time const. | $C \times R_{is}$ | \geq 10000S (100VDC 60S) |
| Self inductance | L_e | 80nH (typical value) |
| Lowest operating temperature | \ominus_{min} | -40°C |
| Maximum operating temperature | \ominus_{max} | 85°C |
| Storage temperature | $\ominus_{storage}$ | -40~85°C |
| Service life | at $\ominus_{hotspot}$ | 100000 h (\leq 70 °C) |
| Failure quota | | 100Fit |
| Test data | | |
| Voltage test between terminals | V_{tt} | 1.5 U_N /10S |
| A.C. voltage test terminal/container | V_{t-c} | 6000V.AC/60S |
| Operating altitude | | 2000m(max) |
| Weight | | \approx 51kg |

Mechanical characteristics

| | |
|--------------|---|
| Dielectric | DC - metallized polypropylene capacitor, self-healing |
| Construction | Stainless steel case, welded, brass terminals, plastic insulators |
| Surface | Untreated |
| Protection | Without internal safety device, only to be used in uncritical environment |
| Impregnant | Dry type, PU, Non-PCB |