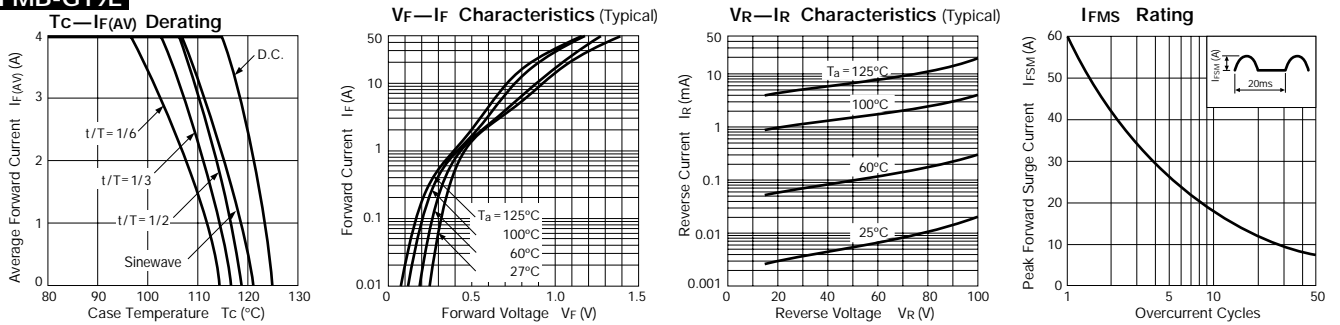


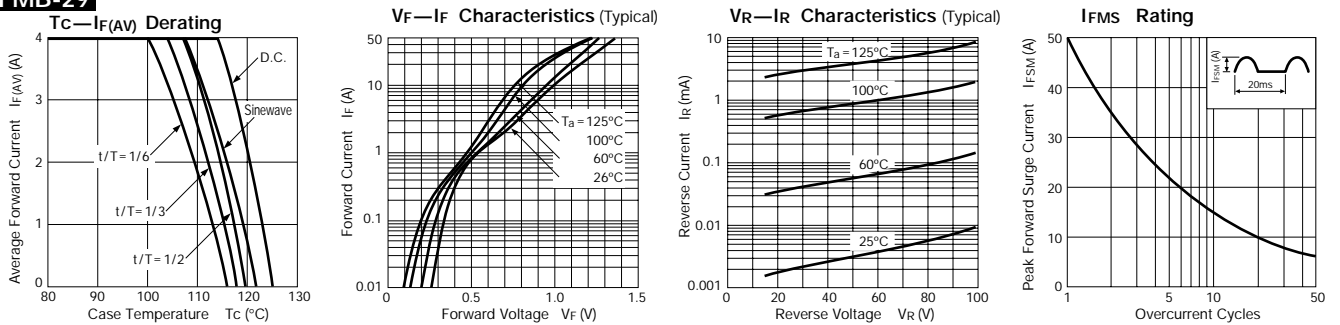
Schottky Barrier Diodes 90V

Parameter Type No.	Absolute Maximum Ratings					Electrical Characteristics (Ta=25°C)					Others				
	V _{RM} (V)	I _{F(AV)} (A)	I _{FSM} (A)	T _J (°C)	T _{stg} (°C)	V _F (V)	I _R (mA)	I _R (H) (mA)	t _{rr} (ns)	R _{th} (j-c) (°C/W)	Mass (g)	Remarks	Fig.		
			50Hz Half-cycle Sinewave Single Shot	max per element	I _F (A)		V _R =V _{RM} max per element	V _R =V _{RM} , Ta=100°C max per element						I _F /I _{RP} (mA)	
FMB-G19L	90	4.0	60	-40 to +150	0.81	4.0	5.0	35	100	100/100	4.0	2.1	1 Chip	Ⓐ	
FMB-29			50				3.0	15					Center-tap	Ⓑ	
FMB-29L		8.0	5.0				35	2.0					5.5	Center-tap	Ⓒ
FMB-39		15.0	7.5				50								
FMB-39M		20.0	10.0				60								

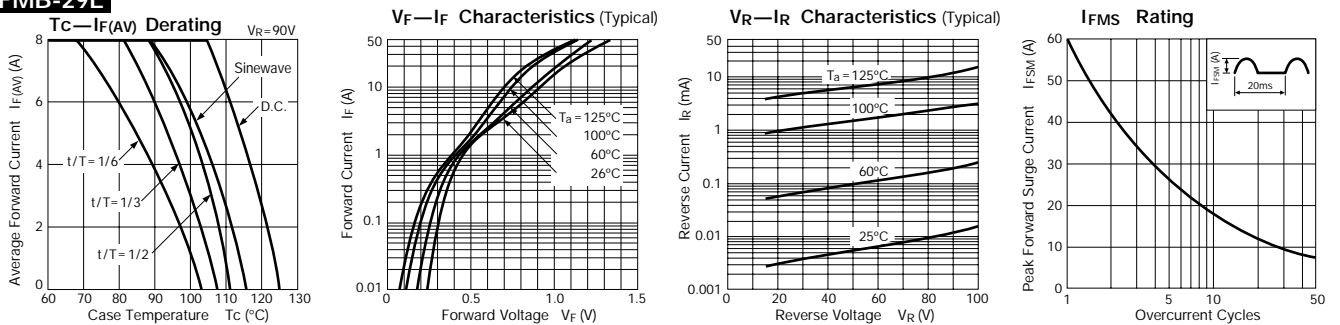
FMB-G19L



FMB-29



FMB-29L



External Dimensions

(Unit: mm) (Full-mold)

Flammability:
UL94V-0 or Equivalent

Fig. Ⓐ

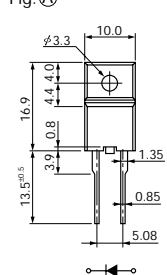


Fig. Ⓑ

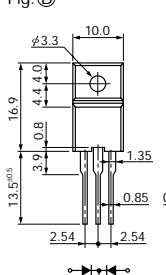
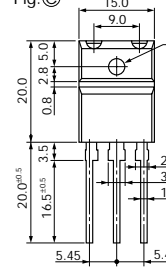
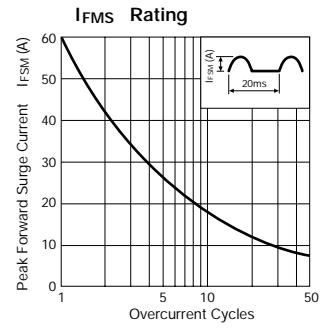
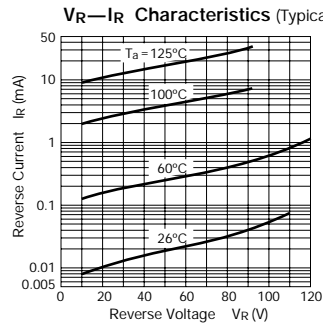
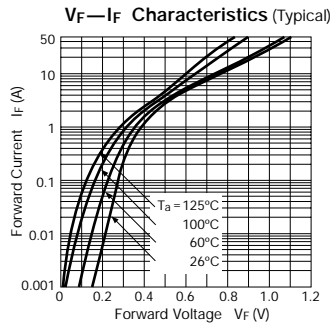
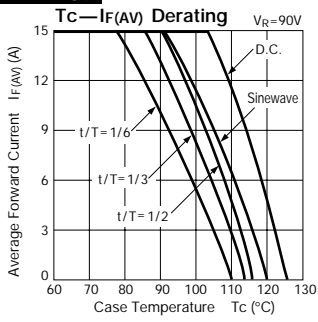


Fig. Ⓒ



FMB-39



FMB-39M

