

### SPECIFICATIONS

CONTACT RATING: Q: 1.5A @250 VAC or 28 VDC  
 LIFE CYCLE: 6,000 make-and-break cycles  
 CONTACT RESISTANCE: 20 mΩ max. initial  
 INSULATION RESISTANCE: 1,000 MΩ min.  
 DIELECTRIC STRENGTH: 1,500 V RMS @ sea level.  
 OPERATING TEMPERATURE: -30°C to +85°C

### MATERIALS

CASE - diallyl phthalate ( DAP )  
 PLUNGER - Nylon  
 BUSHING - Copper alloy, nickel plated  
 HOUSING - Stainless Steel  
 CONTACT AND TERMINAL - Copper alloy, silver or gold plated  
 SWITCH SUPPORT - Copper alloy, tin plated

INDEX

TOGGLE

ROCKER

SLIDE

PUSH BUTTON / MICRO

DIP / ROTARY

KEY / TACT

## How do you build the switches you need!!

The TL-22 , please see the (A) ;

The TL-22A/TL-22B, please see the (B)

(A) TL - 22 - S C Q - E - A5 -

Switches Function		Bushing		Termination		Epoxy seal		Vertical support Bracket	
TL-22	SPDT on-on	S	10-48 thd.(FLAT)	C	P.C	(none)	none seal	(none)	(std)straight type
		U	none thd.(FLAT)			E	epoxy seal	A5	snap-in type
		T	none thd.(ROUND)					A5S	
				Contact Material				<b>RoHS code</b>	
				Q	silver plated			H = RoHS Compliant	
				R	gold plated				
				G	gold over silver				
				K	gold / tin				

(B) TL - 22 A - U Q - E - -

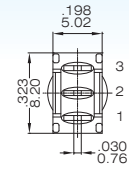
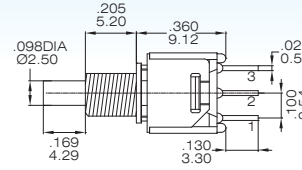
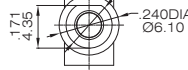
Horizon Right Angle	Vertical Right Angle	Switches Function	Bushing		Contact Material		Epoxy seal		
TL-22A	TL-22B	SPDT on-on	S	10-48 thd.(FLAT)	Q	silver plated	(none)	none seal	
			U	none thd.(FLAT)	R	gold plated	E	epoxy seal	
			T	none thd.(ROUND)	G	gold over silver			
					K	gold / tin			
						Support Bracket			
						(none)	Std. straight type		
						S	snap-in type		
						RoHS code			
						H = RoHS Compliant			



### SPDT



Model No.	Switching position	
TL-22	On	On
Term. Comm.	2-1	2-3

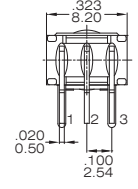
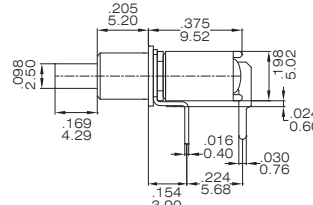
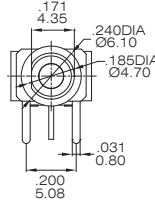


TL-22- SCQ

### SPDT



Model No.	Switching position	
TL-22A	On	On
Term. Comm.	2-1	2-3

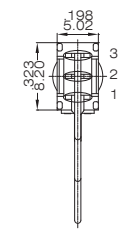
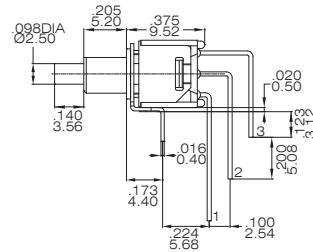
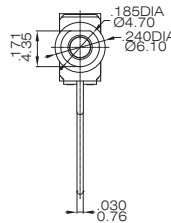


TL-22A-UQ

### SPDT



Model No.	Switching position	
TL-22B	On	On
Term. Comm.	2-1	2-3

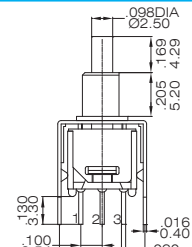
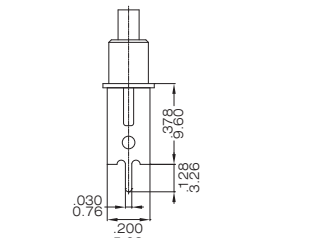
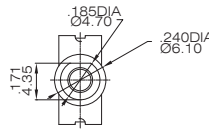


TL-22B- UQ

### SPDT



Model No.	Switching position	
TL-22-A5	On	On
Term. Comm.	2-1	2-3

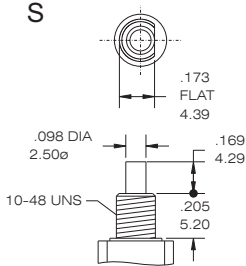


TL-22-UCQ-A5

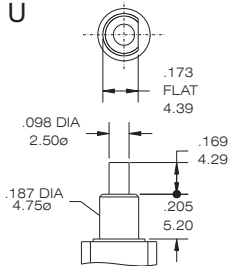
### Bushing Option

### Terminal Seal Option

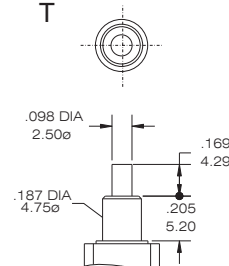
S



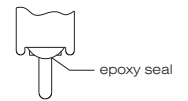
U



T



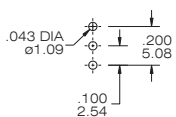
-E Terminal Seal



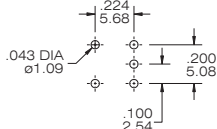
### P.C.B MOUNTING DIMENSION

### PANEL MOUNTING DIMENSION

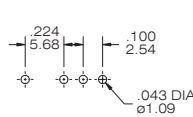
TL-22 (PC terminal)



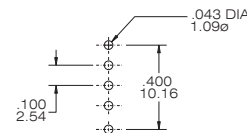
TL-22A



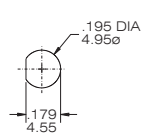
TL-22B



TL-22-A5



10-48 BUSHING



### CONTACT MATERIAL OPTIONS

CODE	CONTACT MATERIAL	TERMINAL MATERIAL	RATING
Q	Silver plated	Silver plated	1.5 A @ 250VAC or 28 VDC;
R	Gold plated over nickel plated	Gold plated over nickel plated	0.4VA MAX @ 20 VAC or DC MAX
G	Gold plated over silver plated	Gold plated over silver plated	0.4 VA MAX @ 20 VAC or DC MAX or 1.5 A @ 250 VAC or 28 VDC;
K	Gold plated over nickel plated	Tin over nickel plated	0.4VA MAX @ 20 V AC or DC MAX

\* THE K option is only for some special item. Please inquire first when you need the "K" option