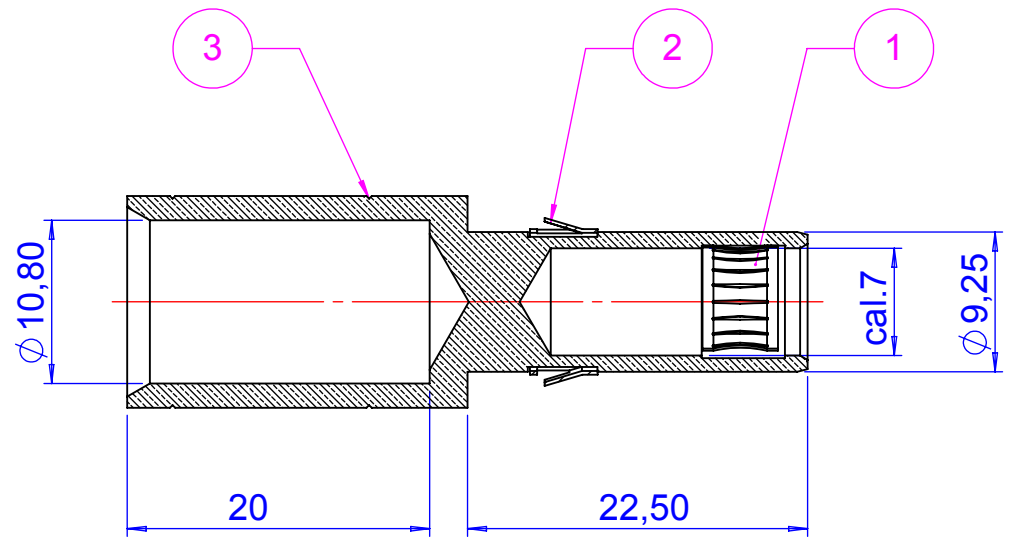
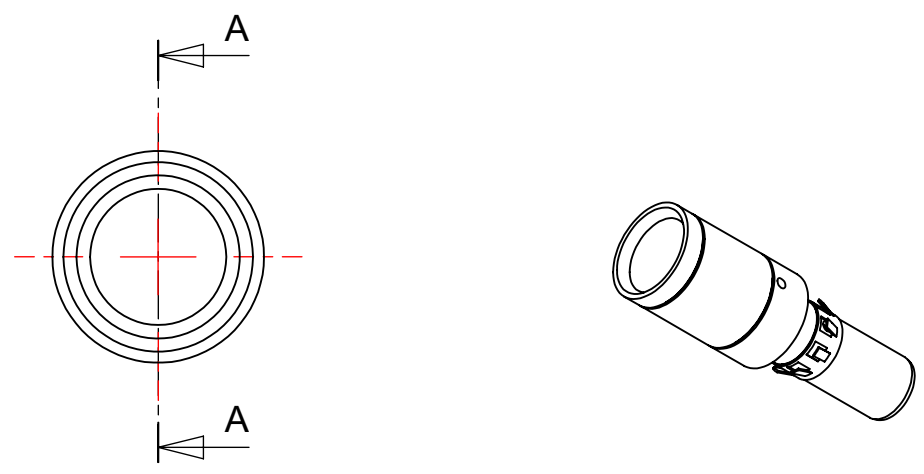


REP Item	Codification Part number	Nbr Qty	Désignation Designation	Masse (g) Weight (g)	Matière Material	Protection Plating	Observations Remarks
1	17813-000A4	1	Diabolo calibre 7 Diabolo caliber 7	0,08	Cuivre béryllium Beryllium copper	Argenture Silver plated	
2	22975-000G3	1	Clip de rétention Retention clip	0,2271	Cuivre béryllium Beryllium copper		
3	23789-000A3	1	Douille cal.7/50 mm ² Socket cal.7/50 mm ²	19,47	LAITON Laiton	Argenture Silver plating	




COUPE A-A



Référence commerciale : DLNS18973-0004

- Outillage de sertissage manuel Mécatraction / Mécatraction manuel crimping tool
- Pince / clamp PMM1CF + matrice / die H1 16-50F
- Outillage de sertissage hydraulique Mécatraction / Mécatraction hydraulic crimping tool
- Pompe / pump PA133K + Vérin / jack SU 130K + Fléxible / flexible F 4622K + matrice / die TN50V13
- Pompe / pump PA133K + Vérin / jack SU 210K + Fléxible / flexible F 4622K + matrice / die TN50V20
- ou / or pompe / pump PA133K + Vérin / jack VF 210K + Fléxible / flexible F 4623K + matrice / die TN50V20
- Outil de démontage / Extraction tool : CCI EXT-G0100

B	01/08/11	LE	Modification repère 2 (22975-000F30 devient 22975-000G30) et ajout référence outil de sertissage et de demontage	315100
A	27/01/03	CL	CREATION	23022
INDIC. Revision	DATE Date	DESSINE PAR Drawn by	MODIFICATIONS-OBSERVATIONS / Modifications-Comments	DIFFUSION Dispatching
ECH / Scale 2:1		ETAT DU DOCUMENT State of the document EXECUTION		MASSE / Weight en gramme / in gram 19.78
PLAN SEMBLABLE OU PLAN DE REF. Similar drawing or reference drawing		FAMILLE / Type CLN		VOLUME / Volume en mm ³
S/E contact Cal 7 - section 50 mm ²		SAUF INDICATIONS If not specified RA		NOTA : TOUTES LES COTES S'ENTENDENT APRES PROTECTION Remark : All the dimensions are to be considered after plating 
S/E contact Cal 7 - cross section 50 mm ²		X		
			S18973-0004	
THIS DOCUMENT IS THE PROPERTY OF CARRIER KHEOPS BAC. IT CANNOT BE USED, REPRODUCED, COMMUNICATED OR REVEALED WITHOUT PRELIMINARY AUTHORIZATION. THIS DRAWING WILL HAVE TO BE MODIFIED ONLY BY SOME CAD MEANS.			A3	Carrier Khéops Bac Bd Pierre-Lefaucheux Z.I. Sud 72027 LE MANS Cedex 02